

DAMS

value for ΔH given by Likhter, the original paper as 0.023 eV, to 530 cal/g atom.

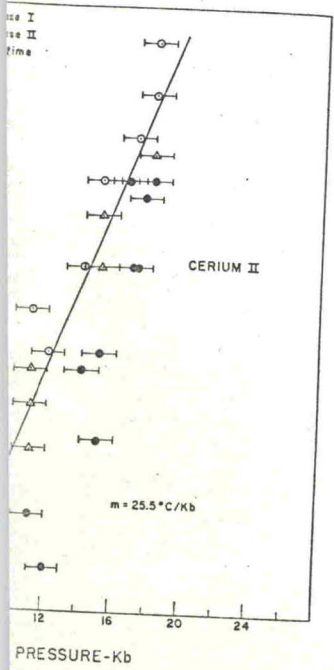


Diagram of cerium showing stability of Cerium II as determined by X-ray data. Each point indicates pressure uncertainty.

Cerium II transformation is sluggish. X-ray examination of both pressure and temperature from the phase boundary. Measurements at constant pressure and

ΔH^* (cal/g. atom)
± 100
50

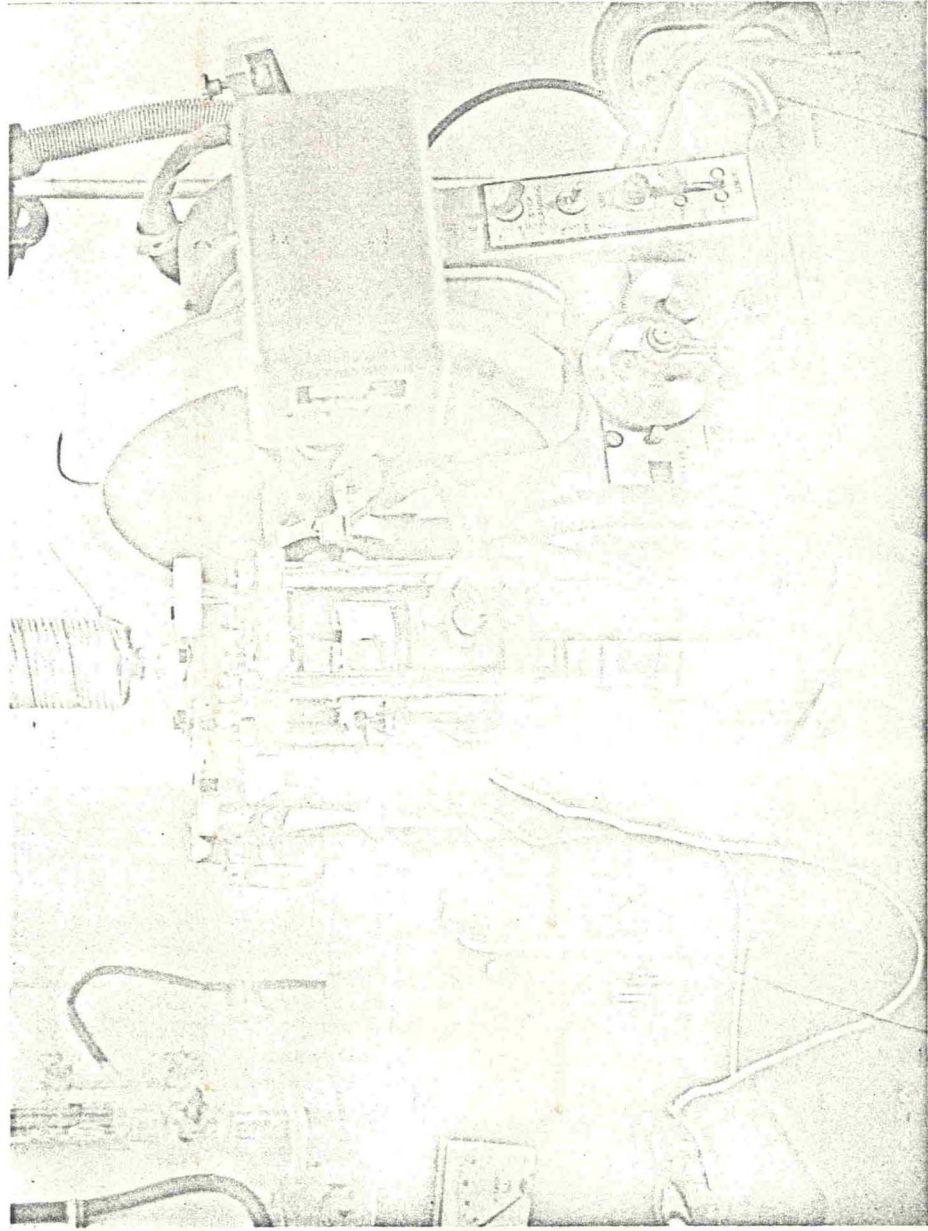


FIG. 2. Close-up view of vessel mounted in press inserted into the goniometer of the diffraction unit. The large hose is the pressure line and the small hoses are water lines leading to the cooling jackets on the ram and spindle. Wires are power leads and thermocouple. X-ray shields have been removed.